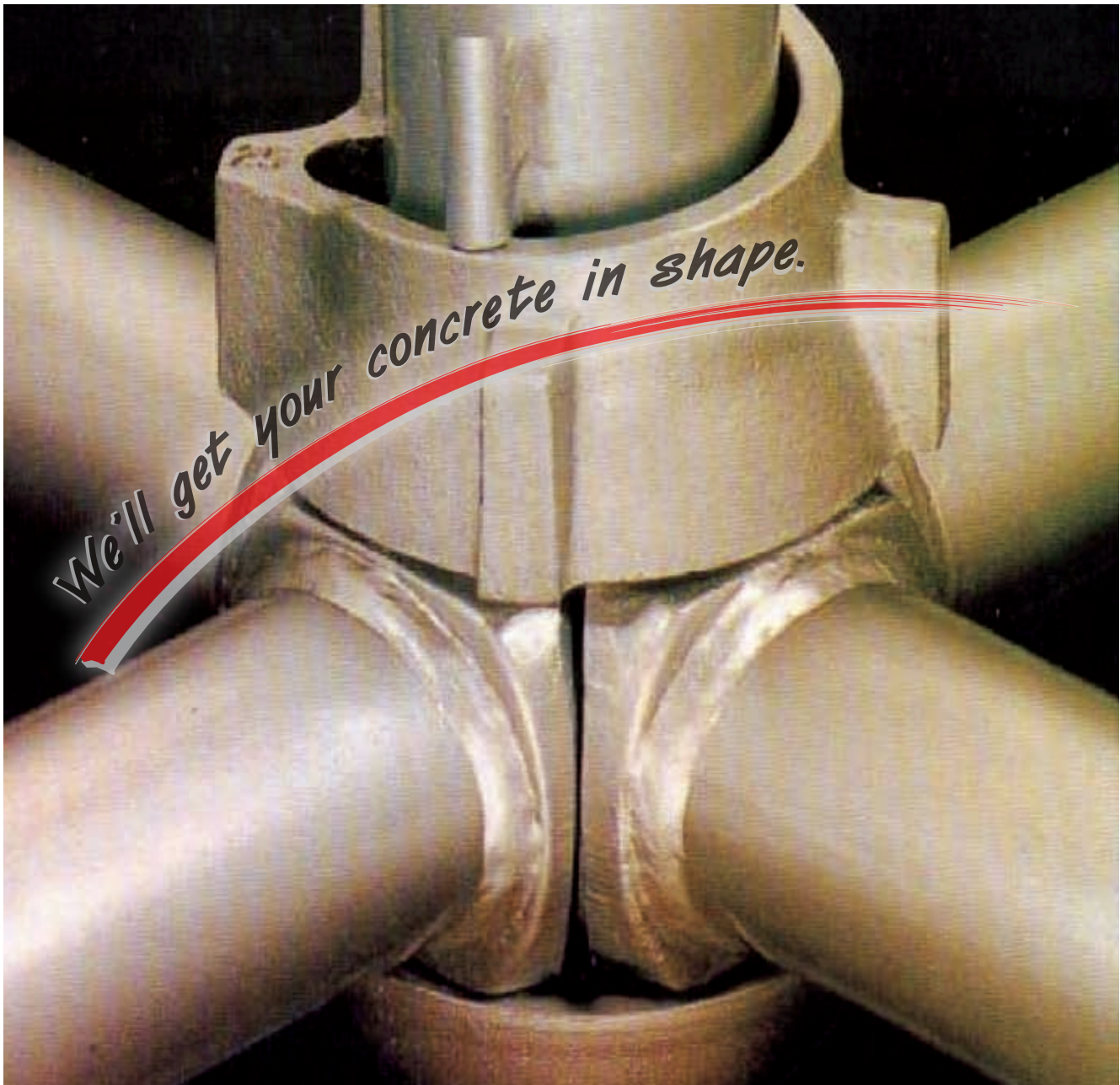


alpi south east asia co.,ltd.



caplock

scaffolding system



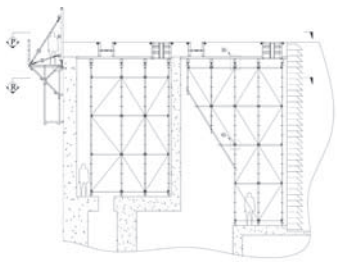
We'll get your concrete in shape.

We'll get your concrete in shape.



SYSTEMS FOR FORMWORK AND FALSEWORK

alpi sea alpi sea alpi sea alpi sea alpi sea alpi sea alpi sea alpi sea alpi sea alpi sea



caplock

alpisea's caplock scaffolding system is the result of over 20 years experience gained on major projects throughout the world.

SIMPLICITY.

alpisea's caplock scaffolding system is a universally established prefabricated scaffolding system. Its inherent simplicity is what makes **alpisea's caplock** a versatile, efficient and cost effective alternative to traditional tube and coupler scaffolds.



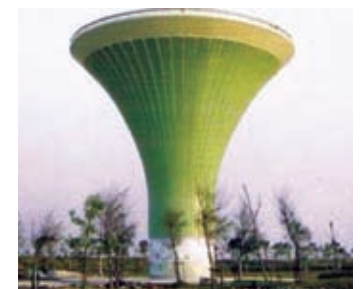
ALL TYPE OF ACCESS.

alpisea's caplock scaffolding system is an extremely versatile modular system that can be used for all types of scaffolding access requirements. Components are light-weight and therefore erection and dismantling is accomplished easily by a small crew.



ONE SINGLE ACTION.

The Principal feature of **alpisea's caplock** scaffolding system is the unique node point-locking up to four horizontals in one single action without the use of nuts, bolts or even wedges. The locking device is formed by a fixed lower cap, which is welded to the vertical at 0.5 m intervals, and a sliding upper cap. The forged blade ends of the horizontals are located in the lower cap. The upper cap is moved down and rotated by hammer blows to give a positive and rigid connection.



ALL TYPES OF JOBSITES.

alpisea's caplock access scaffolding can be used for new build, as well as repair and maintenance projects:

- Commercial
- Residential
- Housing
- Industrial
- Leisure Stadiums
- Shipbuilding
- Civil
- Utilities

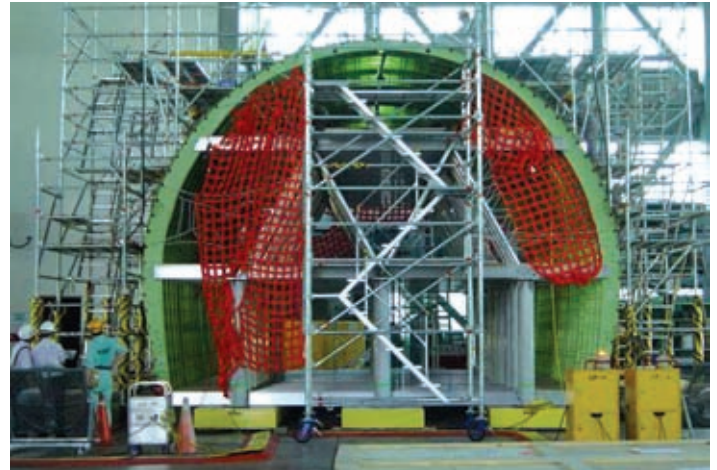
SOFTWARE SUPPORT.

The **alpisea's caplock** scaffolding system is supported with HIGH-TECH software that will calculate, the estimate quantities to help manage your project more efficiently.

menus to select your quantity, weight and price options and you'll receive immediate information which will help you to secure and plan the task ahead of you.

Introducing the software, a comprehensive and flexible way of rapidly calculating the amount of equipment you'll need for any project. Just give your project a title then input the relevant dimensions. Then, use the drop down

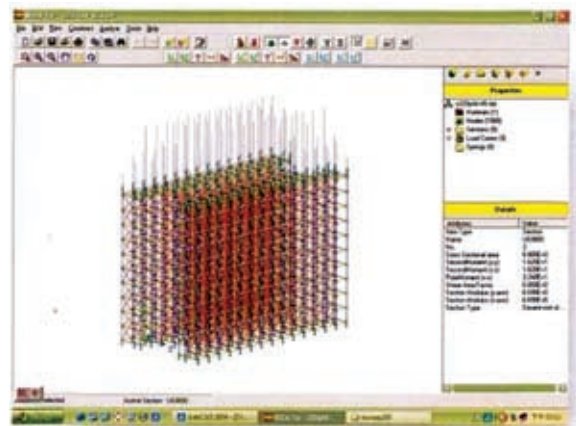
In connection with falsework and support constructions at large heights, different systems are required depending on the scaffold tower height and loads to be carried. The most important criterion when selecting a shoring



system is the level of adaptability to the formwork to be used.

With this extensive programme, **alpisea** offers

the most economical solution for each application in the area of scaffolding systems.



quality control & assurance

All shoring designs are checked with NAF-NIDA (Nonlinear Analysis of Frames Series: Nonlinear Integrated Design Analysis) to ensure the entire system's load-carrying capacity and maximum side reaction based on structural stability.



accessories

TOWER

MODEL	SIZE (mm)	WEIGHT (KG)
CT 300	3,000	16.6
CT 250	2,500	14.2
CT 200	2,000	11.6
CT 150	1,500	8.7
CT 100	1,000	6.1
CT 50	500	3.5



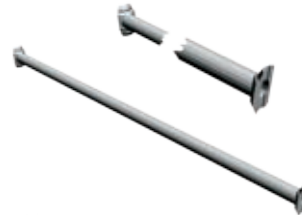
Tower



U-Head

HORIZONTAL SINGLE BRACING

MODEL	SIZE (mm)	WEIGHT (KG)
CHSB 305	3,050	11.9
CHSB 275	2,750	10.9
CHSB 250	2,500	9.8
CHSB 244	2,440	9.6
CHSB 213	2,130	8.4
CHSB 180	1,800	7.1
CHSB 150	1,500	5.9
CHSB 122	1,220	4.9
CHSB 106	1,067	4.3
CHSB 91	910	3.8
CHSB 56	565	2.5



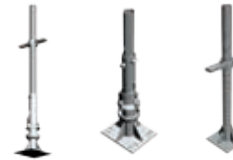
Horizontal Single Bracing



Caster Wheel

ADJUSTABLE BASE PLATE

MODEL	SIZE (mm)	WEIGHT (KG)
CBP 120	1,200	11.8
CBP 87	870	5.3
CBP 61	610	2.3



Adjustable Base Plate



Ladder Bracket

EXTENTION WALK WAY

MODEL	SIZE (mm)	WEIGHT (KG)
CEW	1,300	5.4
CEW+	1,620	6.7



Extention Walk Way

DIAGONAL BRACING SWIVEL

MODEL	SIZE (mm)	WEIGHT (KG)
CBS 250	2,500 x 2,000	14.2
CBS 243	2,438 x 2,000	14.1
CBS 213	2,130 x 2,000	13.5



Diagonal Bracing Swivel



Stair

HORIZONTAL DOUBLE BRACING

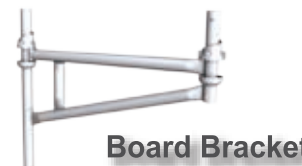
MODEL	SIZE (mm)	WEIGHT (KG)
CHDB 305	3,050	25.0
CHDB 275	2,750	23.0
CHDB 244	2,440	20.0
CHDB 213	2,130	13.0



Horizontal Double Bracing

BOARD BRACKET

MODEL	SIZE	WEIGHT (KG)
CBB 1	1 Plank	1.6
CBB 2	2 Plank	5.7
CBB 3	3 Plank	7.6



Board Bracket

STEEL PLANK

MODEL	SIZE (mm)	WEIGHT (KG)
CSP 305	228 x 3050 x 80	23.3
CSP 213	228 x 2130 x 80	15.0
CSP 157	228 x 1572 x 80	11.8
CSP 115	228 x 1150 x 80	8.4



Steel Plank



Swivel Brace

alpisea's caplock scaffolding system is ideal for a wide range of applications, including continuous facade, circular scaffold, birdcage access and staircase access, and it is a well proven heavy duty falsework support system which are universal jacks, super planks and stair access systems.



SAVING TIME & COSTS.

alpisea's caplock scaffolding system is a cost effective, modular, steel shoring system, developed from **alpisea's** extensive range of product. It's robust, galvanised and ease of assembly that made **alpisea's caplock** system the premier choice in modular shoring.

New building construction, renovations and building maintenance, power plants, ship building and

maintenance and other industrial applications.

- Quick fastening of horizontals. Four horizontals can be fastened at one time with firm clamping action of top cap making the joint rigid.
- Quick erection and dismantling results in time and labors saving.
- Versatile use in construction, demolition or maintenance projects

for any type of structure i.e. straight or curved.

- Easy erection with no loose components.
- Lightweight but high loads carrying capacity up to 57 KN per vertical.
- Erected 80% faster than traditional scaffolding.
- Low maintenance.
- Safety with proven track record.



alpisea has been exclusively producing formwork and scaffolding systems for the building & infrastructure industry since 1992.

As well as our **caplock** scaffolding system our production range includes **ringlock** scaffolding system, mini, midi, tunnel, box-culvert, precast and

custom made formwork system with all the necessary accessories for every building and site requirement.

alpisea MODULAR SYSTEMS: SOLID FOUNDATIONS FOR YOUR SUCCESS.

Located in the geographical center of South East Asia, in an environment where skilled labor, management, materials and transport services are available at competitive prices, **alpisea** operates from an easily accessible location just outside Bangkok.

Our head offices, including a research centre, administration offices and production workshops are ideally situated in Bangkok area.

For Additional information regarding the Alpi South East Asia's Co. Ltd line of products and ongoing project, please visit us @ <http://www.alpisea.com>



Head Office:
Alpi South East Asia Co.,Ltd.
9/13 Moo 9 Samakkee Road,
Tambon Bangtalad, Amphur
Pakkred, Nonthaburi Province
11120 THAILAND
Tel : +66 (0) 2 574 5946
Fax : +66 (0) 2 573 4176
E-mail : management@alpisea.com

Distributed by: