

alpi south east asia co.,ltd.



midi

panel

HIGH-TECH
MODULAR
ELEMENTS.

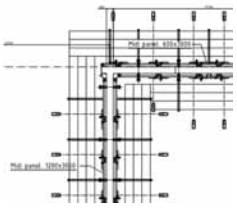


We'll get your concrete in shape.

We'll get your concrete in shape.

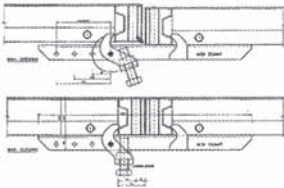
alpi sea alpi sea alpi sea alpi sea alpi sea alpi sea alpi sea alpi sea alpi sea alpi sea

SYSTEMS FOR FORMWORK AND FALSEWORK



midi

Modern building & infrastructure site demands formwork which is able to provide increasingly sophisticated performance alignment and, locking of panels with pins and wedges no longer meet our standards.



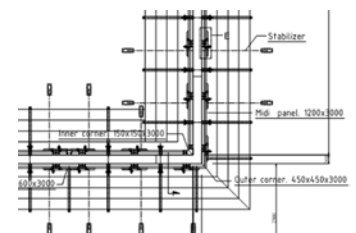
HIGH-TECH MODULAR ELEMENTS.

This objective has now become reality; **steel midi**, the system developed and patented by **alpisea** on the basis of its considerable site experience.

The simplicity of the **midi** system comes from technology developed on-site in real work situations.

- A pivot of a reach on the bolt (M24) turns the rotary jaws, moving the edge profiles towards the alignment system in this way, the two profiles are perfectly **coplanar**
- The **bolt** then further tightens the device: the two profiles are now completely **locked**.
- In this position, the alignment device creates a bridge between the two adjacent panels, which are locked and **aligned** with absolute precision.

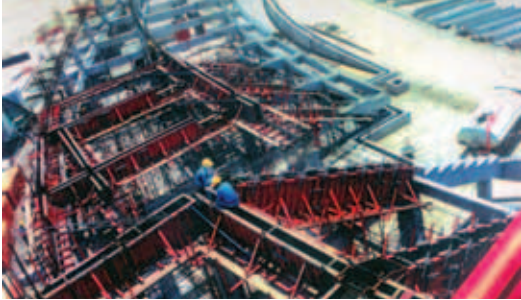
We set ourselves the task of designing and testing a simple, fast coupling system which would ensure that panels were perfectly **coplanar** (no offset), **well-locked** (no loss of grout) and accurately **aligned** (no additional stiffening for handling over large surface areas)





By combining **midi** panels using special flexible metal sheets, it is also possible to execute circular tanks with polygonal faceting.

The **midi** panel system is fully compatible with our **mini** system, with which one can produce ramped brackets, thrust-bearing frames for casts against earth etc.

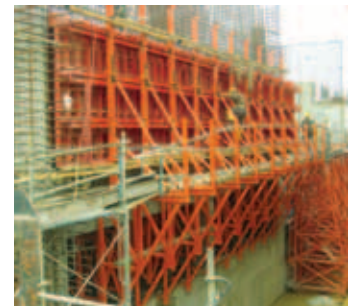


midi technology designed for all your requirements. Take advantage of our technology.



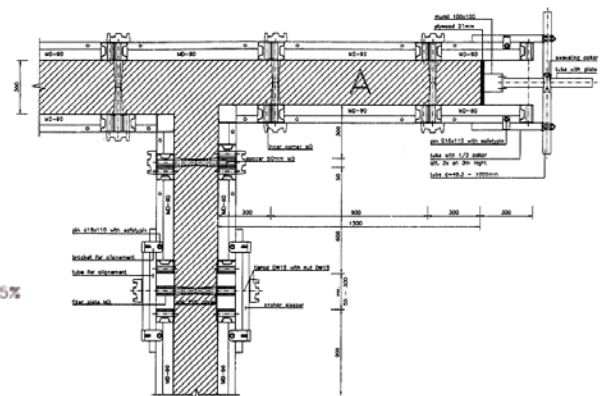
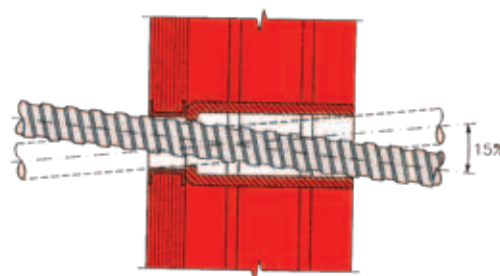
Thanks to the modularity of the **midi** panels and the simple, fast coupling system, each reinforced concrete structure from the foundation edge to high walls, from simple straight walls to the most complex geometry can be executed in the most rational manner.

midi MODULARITY: CONCRETE IN ALL ITS FORMS.

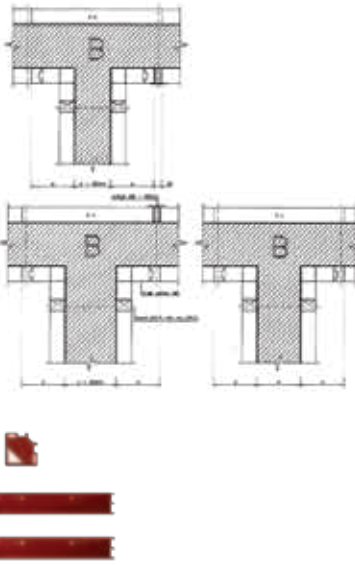


Every **midi** panel is equipped with special drilled U-shaped cross beams to allow

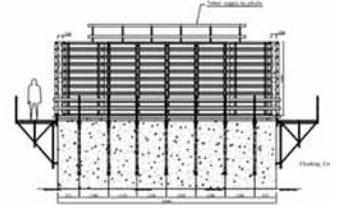
- Installation of tapered walls up to $<12\%$ (tie slant of $\pm 6^\circ$)
- Formation of square or rectangular pillars measuring from 5 upwards in 5 cm stages. Using the special clamping device.



midi 300/150



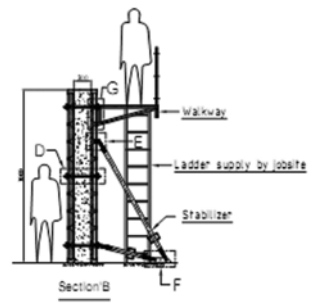
midi 210/120



accessories



Height/Width	300	270	240	210	180	150	120	90	60	30
300	412.91 kg.	384.30 kg.	346.70 kg.	309.09 kg.	271.49 kg.	218.31 kg.	180.70 kg.	143.10 kg.	105.49 kg.	67.89 kg.
270		347.91 kg.	313.91 kg.	279.76 kg.	245.68 kg.	197.64 kg.	163.57 kg.	129.49 kg.	95.42 kg.	61.34 kg.
240			280.97 kg.	250.42 kg.	219.87 kg.	176.98 kg.	146.43 kg.	115.89 kg.	85.34 kg.	54.80 kg.
210				221.08 kg.	194.07 kg.	156.32 kg.	129.30 kg.	102.29 kg.	75.27 kg.	48.25 kg.
180					168.26 kg.	135.66 kg.	112.17 kg.	88.67 kg.	65.19 kg.	41.71 kg.
150						114.99 kg.	95.04 kg.	75.08 kg.	55.12 kg.	35.16 kg.
120							77.90 kg.	61.47 kg.	45.65 kg.	28.62 kg.
90								48.87 kg.	34.65 kg.	22.07 kg.
60									24.09 kg.	15.53 kg.
30										8.98 kg.



Remark :

Category 1 Recommended size

Category 2 Other size

Category 3 May cause transportation problem

HANDLING LARGE SURFACE AREA COUPLED, OVERLAPPED AND ALIGNED PANELS



midi is the best answer to the ever-growing daily requirements of site operators very high structures, high casting pressures, perfect surface concrete, low labour, etc.

midi has been track developed in combination with all our customers planners and site managers.

- Standard heights of 300 and 150 cm (with relative widths of 150, 120 and 90 cm)
- Permitted pressure of <math>< 80 \text{ kN/m}^2</math> with bending of <math>< 1/300</math> in the space between supports

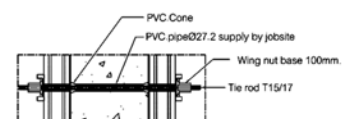
- 3 ties for $h=300$ cm panels (1 tie per square metre) and just 2 ties for $h=240$ panels (0.82 ties per square metre)
- Boxed profile with patented edge profile of $h=10$ cm which allows alignment (**midi clamp**) & lifting (**midi crane hook**) clamps to be fitted along the entire perimeter of the panel

- Patented alignment clamp for rigid alignment and overlapping of panels which can then be handled easily for large surface areas.

- **midi** panel system comes with a 3.2 or 4.5 mm thk steel plate panel or plywood.

alpi: our technology at your service.

midi



alpisea has been exclusively producing formwork and scaffolding systems for the building & infrastructure industry since 1992.

As well as our **midi steel** form system our production range includes **mini** systems, scaffolding, tunnel, box-culvert, precast,

custom made formwork system with all the necessary accessories for every building and site requirement.

alpisea MODULAR SYSTEMS: SOLID FOUNDATIONS FOR YOUR SUCCESS.

Located in the geographical center of South East Asia, in an environment where skilled labor, management, materials and transport services are available at competitive prices, **alpisea** operates from an easily accessible location just outside Bangkok.

Our head offices, including a research centre, administration offices and production workshops are ideally situated in Bangkok area.

For Additional information regarding the Alpi South East Asia's Co. Ltd line of products and ongoing project, please visit us @ <http://www.alpisea.com>



Head Office:
Alpi South East Asia Co.,Ltd.
9/13 Moo 9 Samakkee Road,
Tambon Bangtalad, Amphur
Pakkred, Nonthaburi Province
11120 THAILAND
Tel : +66 (0) 2 574 5946
Fax : +66 (0) 2 573 4176
E-mail : management@alpisea.com

Distributed by: