

alpi south east asia co.,ltd.



ringlock

scaffolding system



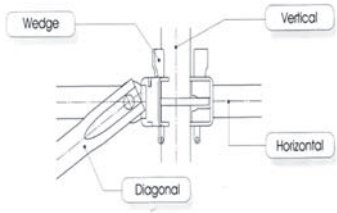
We'll get your concrete in shape.

We'll get your concrete in shape.



SYSTEMS FOR FORMWORK AND FALSEWORK

alpi sea alpi sea alpi sea alpi sea alpi sea alpi sea alpi sea alpi sea alpi sea alpi sea



ringlock

alpisea's ringlock scaffolding system is the simplest method of connecting horizontals and diagonals to verticals in one single action without any use of loose fittings such as, nuts, & bolts etc... Just one hit of a hammer on the wedges is sufficient to obtain complete stability and safety of the connecting component.

8 CONNECTIONS IN 1.

alpisea's experienced engineering team have designed a ingenious connector technology made of 8 connections in one,

automatic right-angles and flexible angle selection, self-locking (by mean of wedges) during assembly.



The tight connection between the rings is the key to the entire scaffolding system. Lateral side forces on the verticals are transferred to horizontals and diagonals to achieve the maximum loading and even distribution of loads throughout the shoring.



HIGH LEG LOAD CAPACITY.

alpisea's ringlock scaffolding system provide high leg-load capacity also provides greater versatility in both high and low support levels.



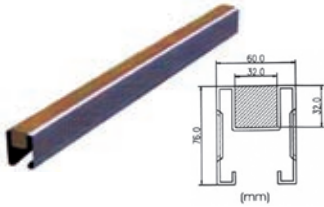
TOP AND BASE BEAM APPLICATIONS.



Used in beam and slab shoring to provide support to downward beams without the need for additional scaffolding and/or timber support. Saves, time and labor costs.



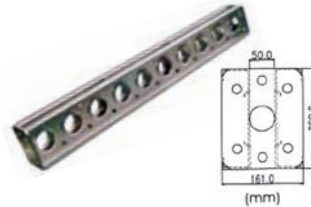
TOP BEAM Material: JIS-STK 400



Features:

- Made of high tensile steel with high loading.
- Complete sizes in supply to meet the different requirements.
- Hot dipped galvanizing to reduce corrosion and rust.

BASE BEAM Material: JIS-STK 500



Features:

- Proprietary Design: A special shaped steel beam combined with timber to achieve high loading. The wooden surface can be nailed to form-work, with ease for & dismantling.
- Different length can be made to order.

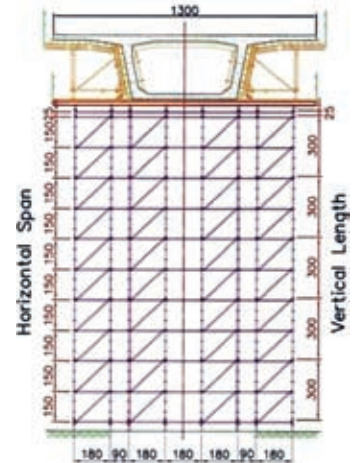
SOFTWARE SUPPORT.

The **alpisea's ringlock** scaffolding system is supported with a HIGH-TECH software that will calculate the estimate the quantities to help manage your project more efficiently.

Introducing the software, a comprehensive and flexible way of rapidly calculating the amount of equip-

ment you'll need for any project. Just give your project a title then input the relevant dimensions. Then, use the drop down menus to select your quantities, weight and price options and you'll receive immediate information which will help you to secure and plan the task ahead of you.

In connection with false-work and support constructions at large heights, different systems are required depending on the scaffold tower height and loads to be carried. The most important criterion when selecting a shoring system is the level of adaptability to the form-work to be used.



quality control & assurance

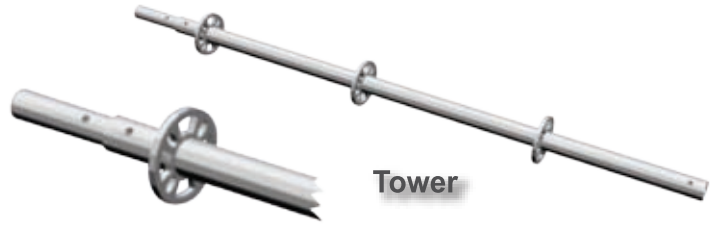
All shoring designs are checked with NAF-NIDA (Nonlinear Analysis of Frames Series: Nonlinear Integrated Design Analysis) to ensure the entire system's load-carrying capacity and maximum side reaction based on structural stability.



accessories

TOWER

MODEL	SIZE (mm)	WEIGHT (KG)
RT 300	3,000	14.6
RT 200	2,000	10.0
RT 150	1,500	7.5
RT 100	1,000	4.8
RT 50	500	2.1



Tower

HORIZONTAL BRACING

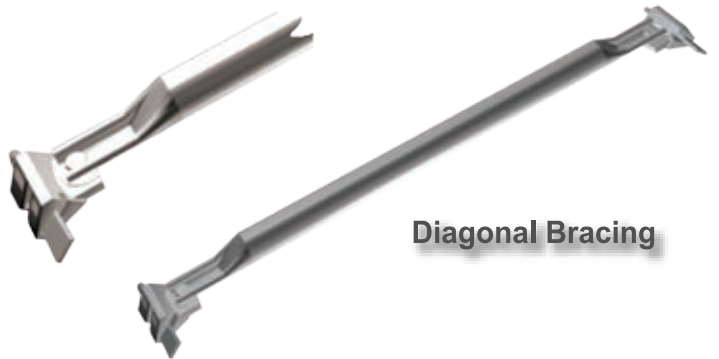
MODEL	SIZE (mm)	WEIGHT (KG)
RHB 340	3,404	13.5
RHB 305	3,050	12.2
RHB 274	2,743	11.1
RHB 243	2,438	10.1
RHB 213	2,130	9.0
RHB 182	1,829	7.9
RHB 162	1,626	7.2
RHB 157	1,572	7.0
RHB 121	1,219	5.8
RHB 115	1,150	5.2
RHB 106	1,065	4.7
RHB 91	915	4.2
RHB 86	864	4.0
RHB 65	650	3.2



Horizontal Bracing

DIAGONAL BRACING

MODEL	SIZE (mm)	WEIGHT (KG)
RDB 356	3,562	9.6
RDB 307	3,076	8.5
RDB 284	2,848	7.3
RDB 264	2,643	6.8
RDB 251	2,515	6.2
RDB 248	2,482	6.0
RDB 229	2,291	5.8
RDB 225	2,258	5.6
RDB 215	2,158	4.9



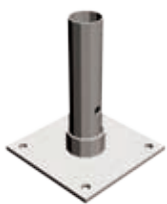
Diagonal Bracing

STEEL PLANK

MODEL	SIZE (mm)	WEIGHT (KG)
RSP 305	3,050	22.4
RSP 213	2,130	15.0
RSP 162	1,626	12.9
RSP 157	1,572	12.5
RSP 115	1,150	9.7
RSP 66	660	5.7



Steel Plank



Base



Head / Bottom



Head Jack



Collar



Pipe Clamp



Ladder



Stair



Banister



Caster Wheel

COMPATIBLE WITH ALL SYSTEM FORM.

alpisea's ringlock scaffolding system It's compatible as a falsework (shoring) system for various formwork types (Traditional, system formwork or with our **midi** steel panels) for a consummate design.



ALL REQUIREMENTS.

alpisea's ringlock scaffolding system can be use in Hi-tech factory, power plants, water towers, recycling plants, refineries, incinerators, largescale performance stages etc... for both falsework and access

such as in viaduct construction, complete towers sets can be moved horizontally using special trollies and rails, then simply crane lifted to the next location, saving time and labor costs.



LIGHTWEIGHT.

alpisea's ringlock scaffolding system can be flexibly assembled and can be use in most construction projects (Civil & Building viaduct, ramp, Side traffic lane, Pier cap, Box-culvert, Drainage culvert, Tunnel).



alpisea has been exclusively producing formwork and scaffolding systems for the building & infrastructure industry since 1992.

As well as our **ringlock** scaffolding system our production range includes **caplock** scaffolding system, mini, midi, tunnel, box-culvert, precast and

custom made formwork system with all the necessary accessories for every building and site requirement.

alpisea MODULAR SYSTEMS: SOLID FOUNDATIONS FOR YOUR SUCCESS.



Located in the geographical center of South East Asia, in an environment where skilled labor, management, materials and transport services are available at competitive prices, **alpisea** operates from an easily accessible location just outside Bangkok.

Our head offices, including a research centre, administration offices and production workshops are ideally situated in Bangkok area.

For Additional information regarding the Alpi South East Asia's Co. Ltd line of products and ongoing project, please visit us @ <http://www.alpisea.com>



Head Office:

Alpi South East Asia Co.,Ltd.

9/13 Moo 9 Samakkee Road,
Tambon Bangtalad, Amphur
Pakkred, Nonthaburi Province
11120 THAILAND

Tel : +66 (0) 2 574 5946

Fax : +66 (0) 2 573 4176

E-mail : management@alpisea.com

Distributed by: